

West Virginia Broadband Mapping Program

Region 6 - Technology: xDSL, BPL, Other Copper

Data as of 9/30/2011

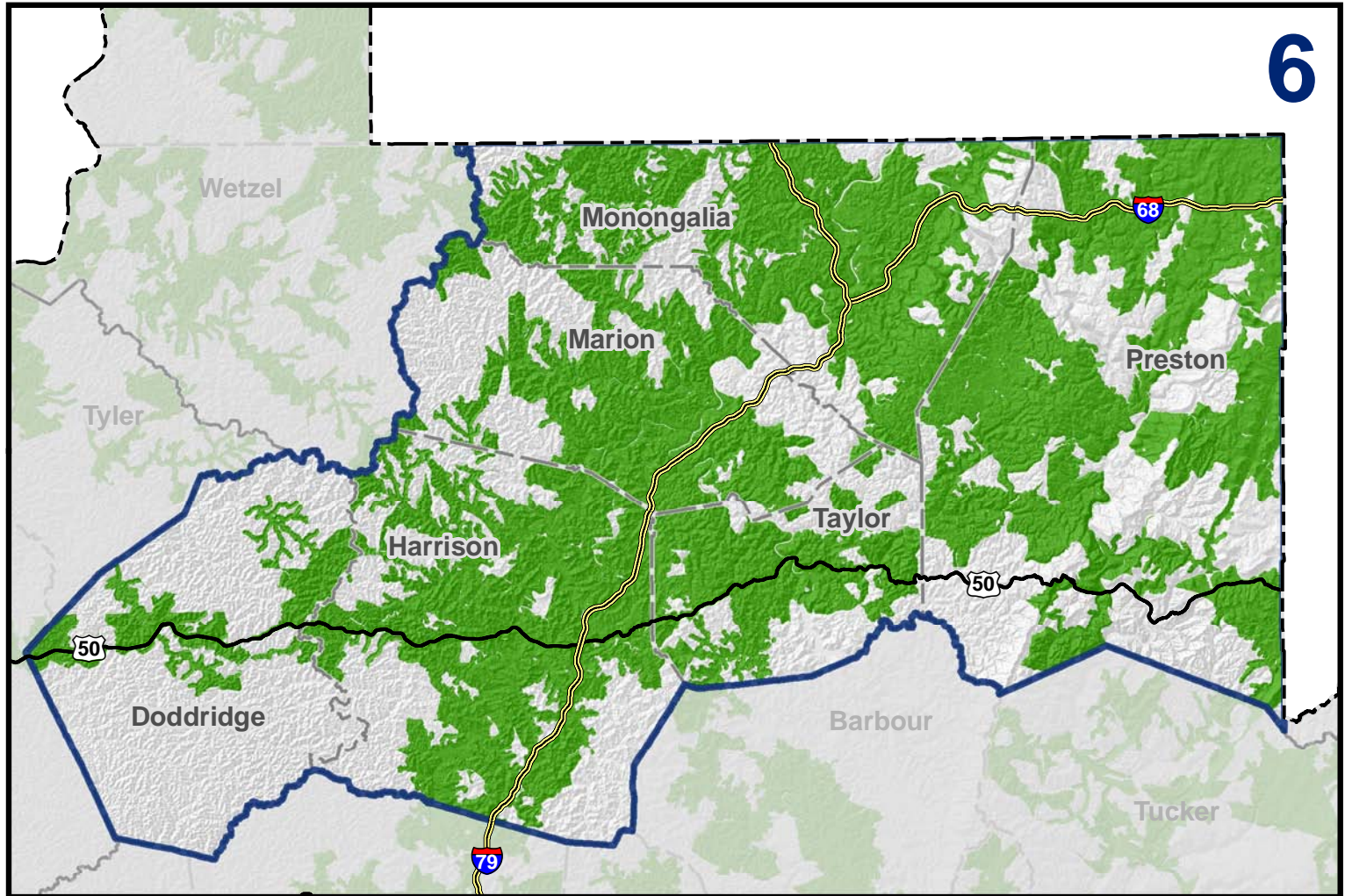
Publications Policy:

This publication represents interpretations of best available data made by professional geographers. As in all research work, professional interpretations may vary, and can change with advancements in both technology and data quality. This publication is offered as a service of the State of West Virginia; proper use of the information herein is the sole responsibility of the user.

Permission to reproduce this publication is granted if acknowledgement is given to the West Virginia Geological and Economic Survey and the West Virginia Broadband Mapping Program.

Map Date: January 9, 2012
Projection: Transverse Mercator
Horizontal Datum: NAD 83
Coordinate System: UTMz17n
Map scale for full 8.5" x 11" display: 1:650,000

6

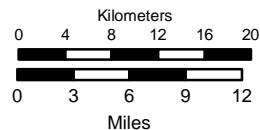


Legend

- xDSL, BPL, Other Copper
- Commerce Planning & Development Regions
- State Boundary
- Counties
- Interstates
- US Highways



West Virginia Geological and Economic Survey
Mont Chateau Research Center
1 Mont Chateau Road
Morgantown, WV 26508-8079
Phone: (304) 594-2331
www.wvgs.wvnet.edu



www.wvbroadbandmap.org

