

# West Virginia Broadband Mapping Program

## Region 6 - Technology: Fixed Wireless

Data as of 9/30/2012

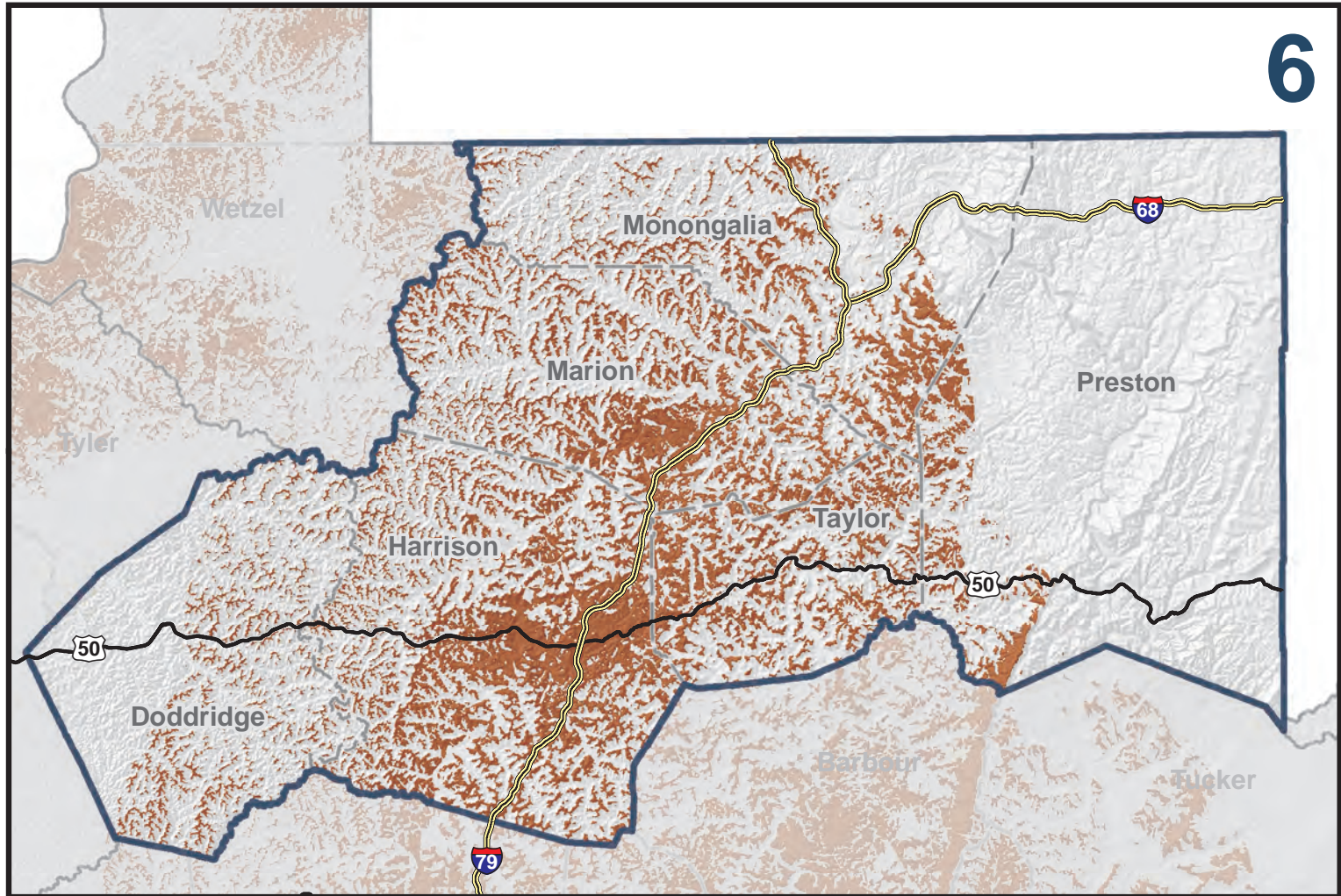
### Publications Policy:

This publication represents interpretations of best available data made by professional geographers. As in all research work, professional interpretations may vary, and can change with advancements in both technology and data quality. This publication is offered as a service of the State of West Virginia; proper use of the information herein is the sole responsibility of the user.

Permission to reproduce this publication is granted if acknowledgement is given to the West Virginia Geological and Economic Survey and the West Virginia Broadband Mapping Program.

Map Date: November 30, 2012  
Projection: Transverse Mercator  
Horizontal Datum: NAD 83  
Coordinate System: UTMz17n  
Map scale for full 8.5" x 11" display: 1:650,000

# 6

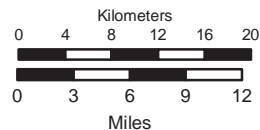


### Legend

- Fixed Wireless
- Commerce Planning & Development Regions
- State Boundary
- Counties
- Interstates
- US Highways



West Virginia Geological and Economic Survey  
Mont Chateau Research Center  
1 Mont Chateau Road  
Morgantown, WV 26508-8079  
Phone: (304) 594-2331  
[www.wvgs.wvnet.edu](http://www.wvgs.wvnet.edu)



[www.wvbroadbandmap.org](http://www.wvbroadbandmap.org)

