

West Virginia

Broadband Mapping Program

Region 7 - Technology: xDSL, BPL, Other Copper

Data as of 9/30/2011

Publications Policy:

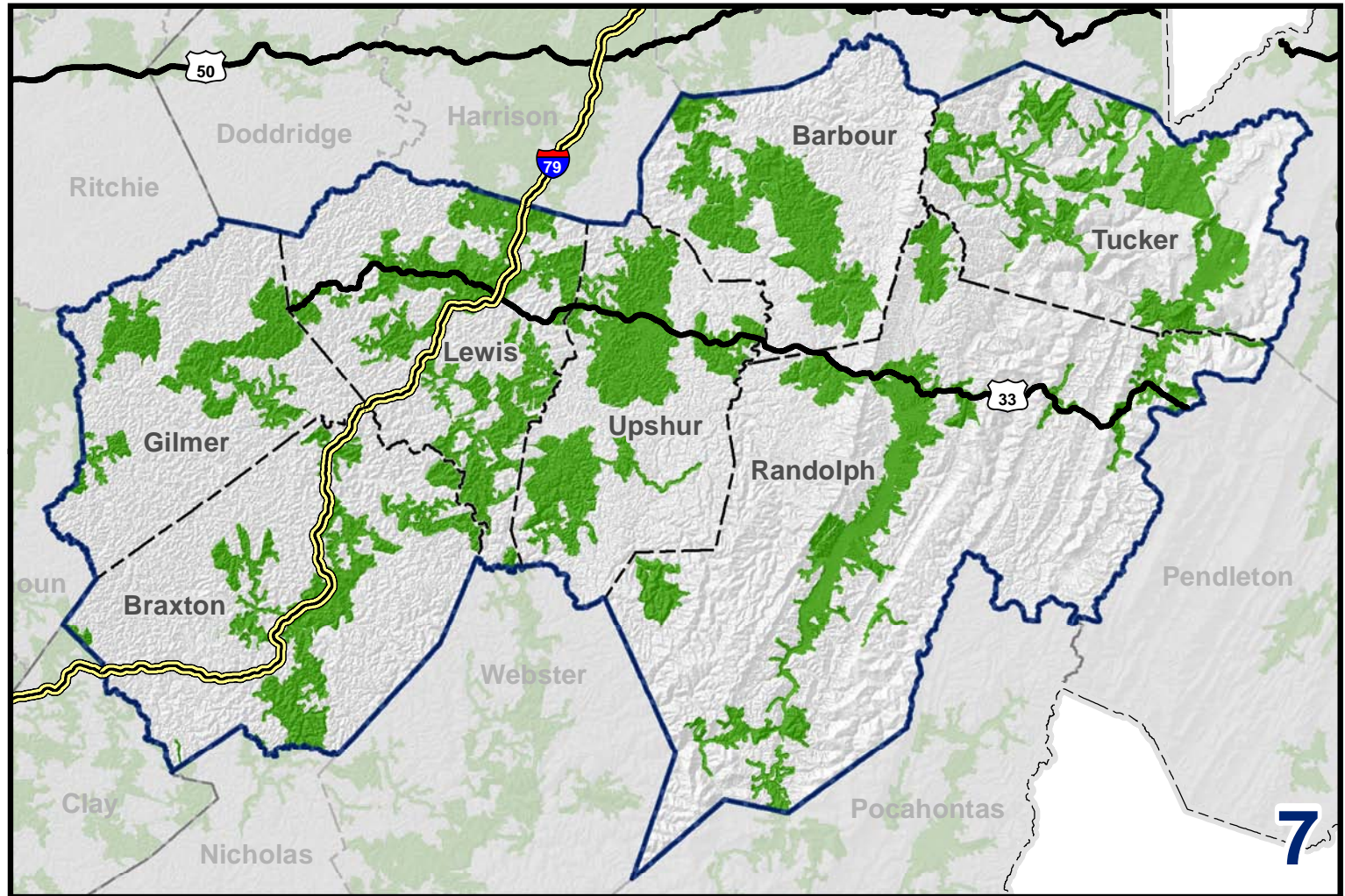
This publication represents interpretations of best available data made by professional geographers. As in all research work, professional interpretations may vary, and can change with advancements in both technology and data quality. This publication is offered as a service of the State of West Virginia; proper use of the information herein is the sole responsibility of the user.

Permission to reproduce this publication is granted if acknowledgement is given to the West Virginia Geological and Economic Survey.

Map Date: January 9, 2012
 Projection: Transverse Mercator
 Horizontal Datum: NAD 83
 Coordinate System: UTMz17n
 Map scale for full 8.5" x 11" display: 1:800,000

Legend

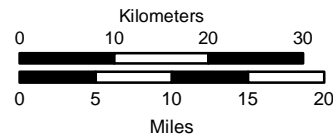
- xDSL, BPL, Other Copper
- Commerce Planning & Development Regions
- Counties
- Interstates
- US Highways



7



West Virginia Geological and Economic Survey
 Mont Chateau Research Center
 1 Mont Chateau Road
 Morgantown, WV 26508-8079
 Phone: (304) 594-2331
www.wvgs.wvnet.edu



www.wvbroadbandmap.org

