



# Coal Bed Mapping Program (CBMP)

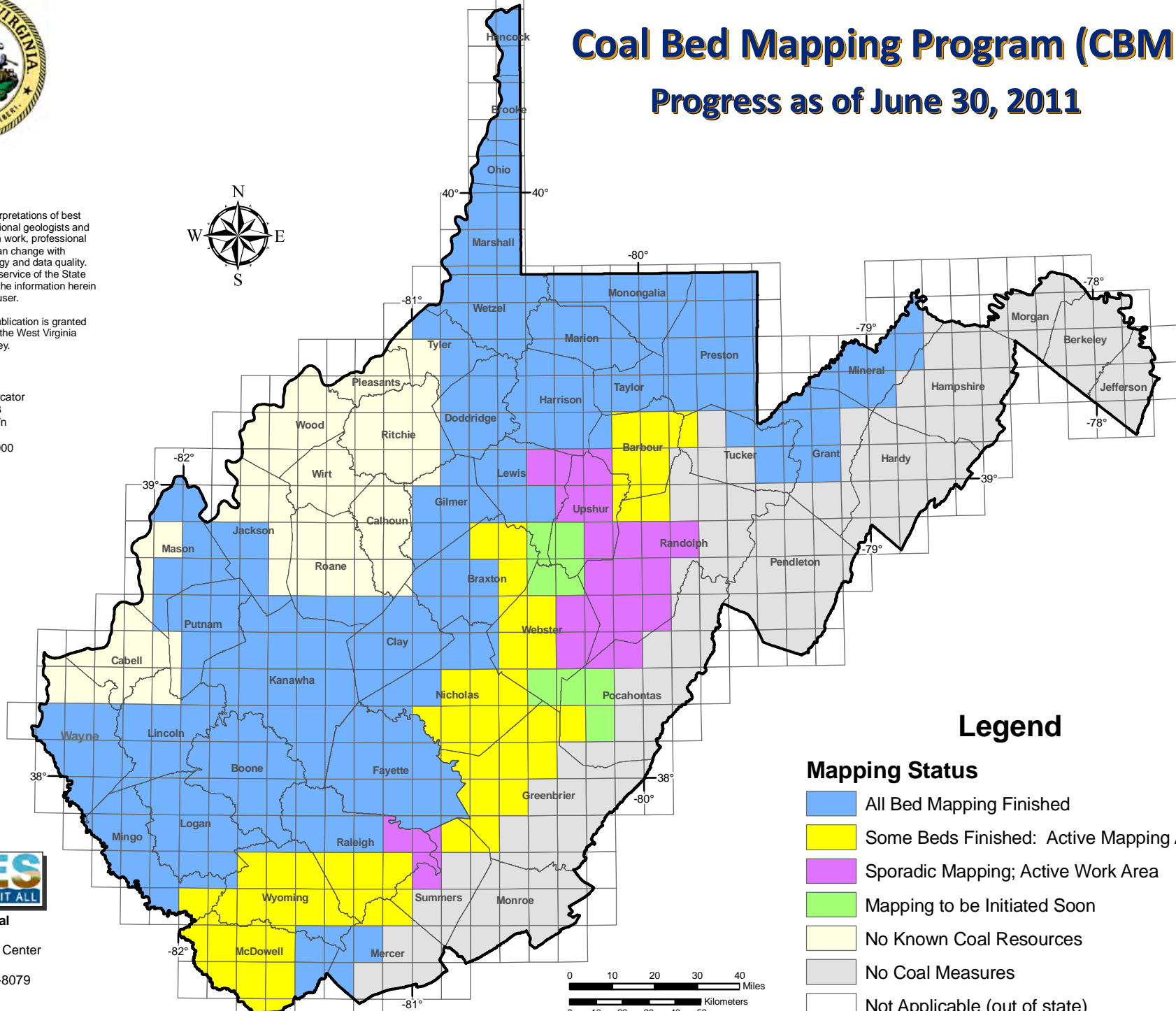
## Progress as of June 30, 2011

### Publications Policy:

This publication represents interpretations of best available data made by professional geologists and geographers. As in all research work, professional interpretations may vary, and can change with advancements in both technology and data quality. This publication is offered as a service of the State of West Virginia; proper use of the information herein is the sole responsibility of the user.

Permission to reproduce this publication is granted if acknowledgement is given to the West Virginia Geological and Economic Survey.

Map Date: June 30, 2011  
Projection: Transverse Mercator  
Horizontal Datum: NAD 1983  
Coordinate System: UTMz17n  
Map scale for full  
8.5" x 11" display: 1:2,000,000



### Legend

#### Mapping Status

- All Bed Mapping Finished
- Some Beds Finished: Active Mapping Area
- Sporadic Mapping; Active Work Area
- Mapping to be Initiated Soon
- No Known Coal Resources
- No Coal Measures
- Not Applicable (out of state)



West Virginia Geological and Economic Survey  
Mont Chateau Research Center  
1 Mont Chateau Road  
Morgantown, WV 26508-8079  
Phone: (304) 594-2331  
[www.wvgs.wvnet.edu](http://www.wvgs.wvnet.edu)

