



# Marcellus Shale in West Virginia

## Publications Policy:

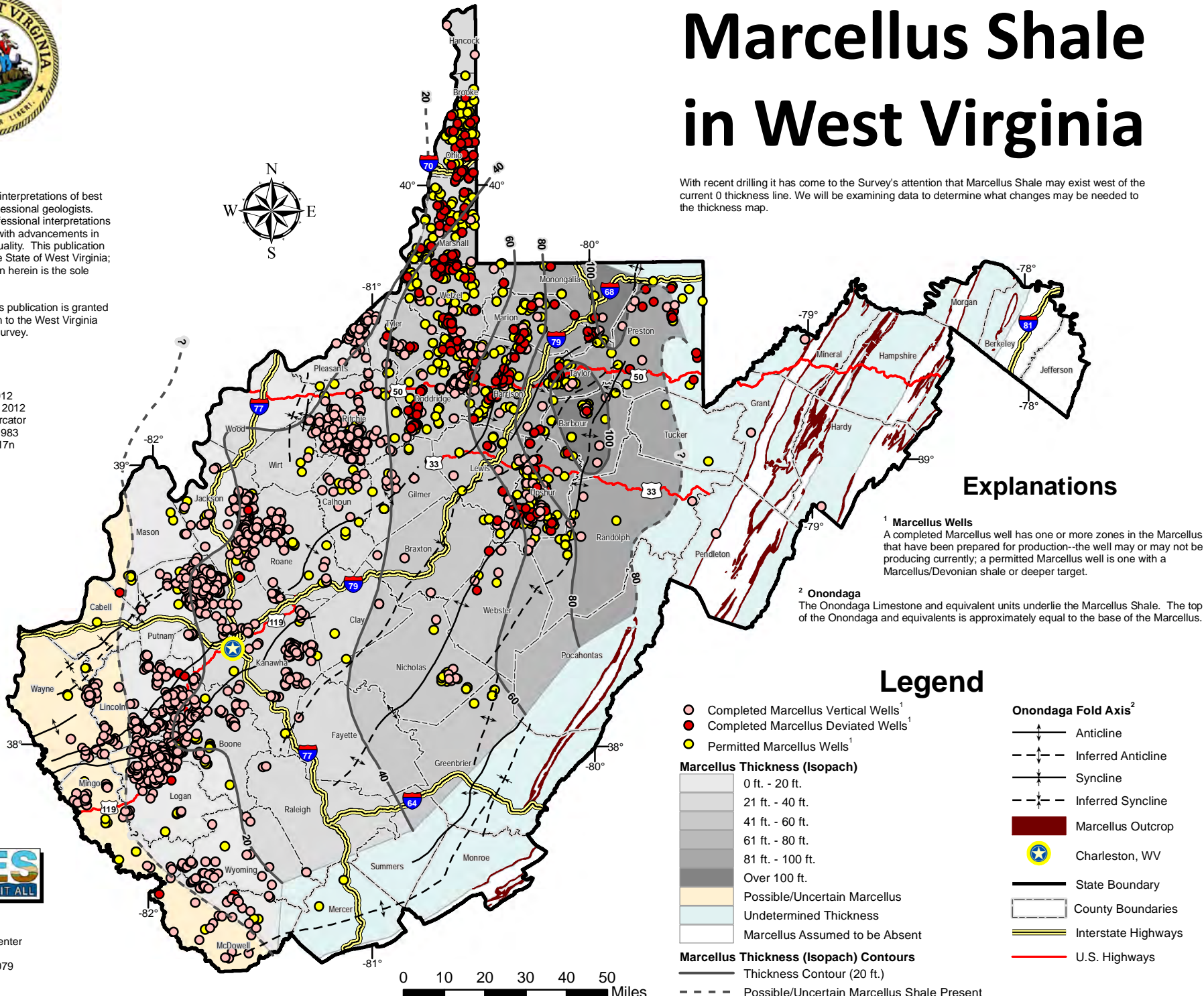
This publication represents interpretations of best available data made by professional geologists. As in all research work, professional interpretations may vary, and can change with advancements in both technology and data quality. This publication is offered as a service of the State of West Virginia; proper use of the information herein is the sole responsibility of the user.

Permission to reproduce this publication is granted if acknowledgement is given to the West Virginia Geological and Economic Survey.

Map Date: October 23, 2012  
 Data Date: September 25, 2012  
 Projection: Transverse Mercator  
 Horizontal Datum: NAD 1983  
 Coordinate System: UTMz17n  
 Map Scale: 1:2,000,000  
 (for full 8.5" x 11" display)



With recent drilling it has come to the Survey's attention that Marcellus Shale may exist west of the current 0 thickness line. We will be examining data to determine what changes may be needed to the thickness map.



## Explanations

- <sup>1</sup> Marcellus Wells**  
 A completed Marcellus well has one or more zones in the Marcellus that have been prepared for production--the well may or may not be producing currently; a permitted Marcellus well is one with a Marcellus/Devonian shale or deeper target.
- <sup>2</sup> Onondaga**  
 The Onondaga Limestone and equivalent units underlie the Marcellus Shale. The top of the Onondaga and equivalents is approximately equal to the base of the Marcellus.

## Legend

- Completed Marcellus Vertical Wells<sup>1</sup>
  - Completed Marcellus Deviated Wells<sup>1</sup>
  - Permitted Marcellus Wells<sup>1</sup>
  - Onondaga Fold Axis<sup>2</sup>
    - Anticline
    - - - Inferred Anticline
    - Syncline
    - - - Inferred Syncline
  - Marcellus Outcrop
  - ★ Charleston, WV
  - State Boundary
  - - - County Boundaries
  - Interstate Highways
  - U.S. Highways
- Marcellus Thickness (Isopach)**
- 0 ft. - 20 ft.
  - 21 ft. - 40 ft.
  - 41 ft. - 60 ft.
  - 61 ft. - 80 ft.
  - 81 ft. - 100 ft.
  - Over 100 ft.
  - Possible/Uncertain Marcellus
  - Undetermined Thickness
  - Marcellus Assumed to be Absent
- Marcellus Thickness (Isopach) Contours**
- Thickness Contour (20 ft.)
  - - - Possible/Uncertain Marcellus Shale Present



West Virginia Geological and Economic Survey  
 Mont Chateau Research Center  
 1 Mont Chateau Road  
 Morgantown, WV 26508-8079  
 Phone: (304) 594-2331  
 www.wvgs.wvnet.edu

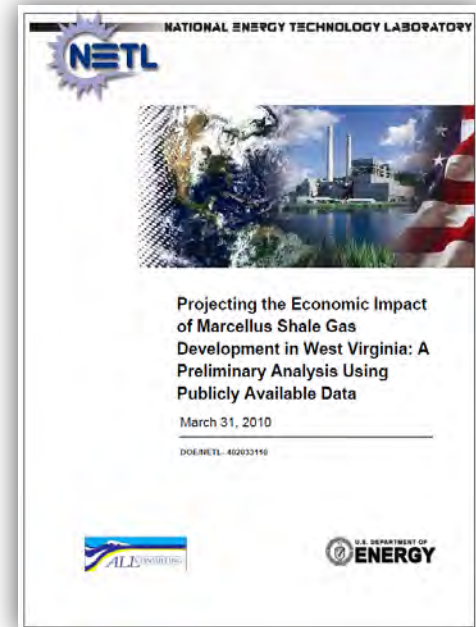
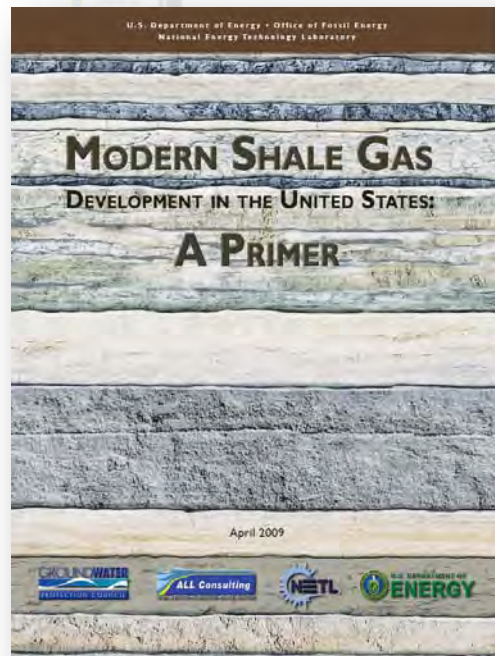
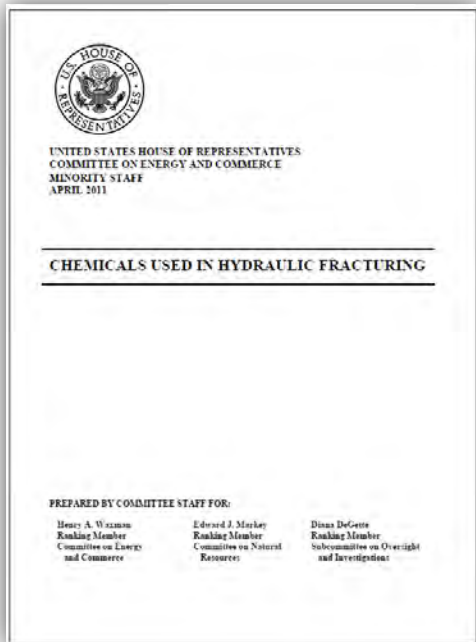
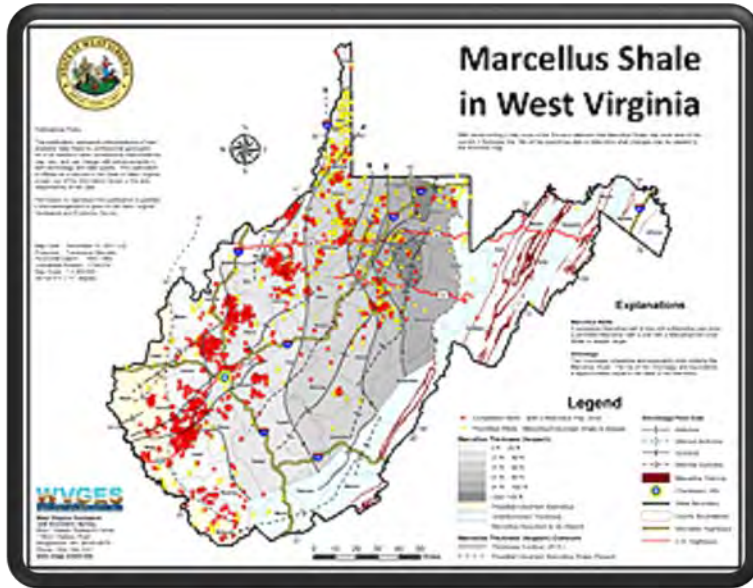
# Marcellus Shale Gas in West Virginia

## Selected References

*West Virginia Geological and Economic Survey*

Home page: <http://www.wvgs.wvnet.edu/>

Marcellus Page: <http://www.wvgs.wvnet.edu/www/datastat/devshales.htm>



<http://www.netl.doe.gov/energy-analyses/pubs/WVMarcellusEconomics3.pdf>

[http://www.netl.doe.gov/technologies/oil-gas/publications/EPreports/Shale\\_Gas\\_Primer\\_2009.pdf](http://www.netl.doe.gov/technologies/oil-gas/publications/EPreports/Shale_Gas_Primer_2009.pdf)

<http://democrats.energycommerce.house.gov/sites/default/files/documents/Hydraulic%20Fracturing%20Report%204.18.11.pdf>