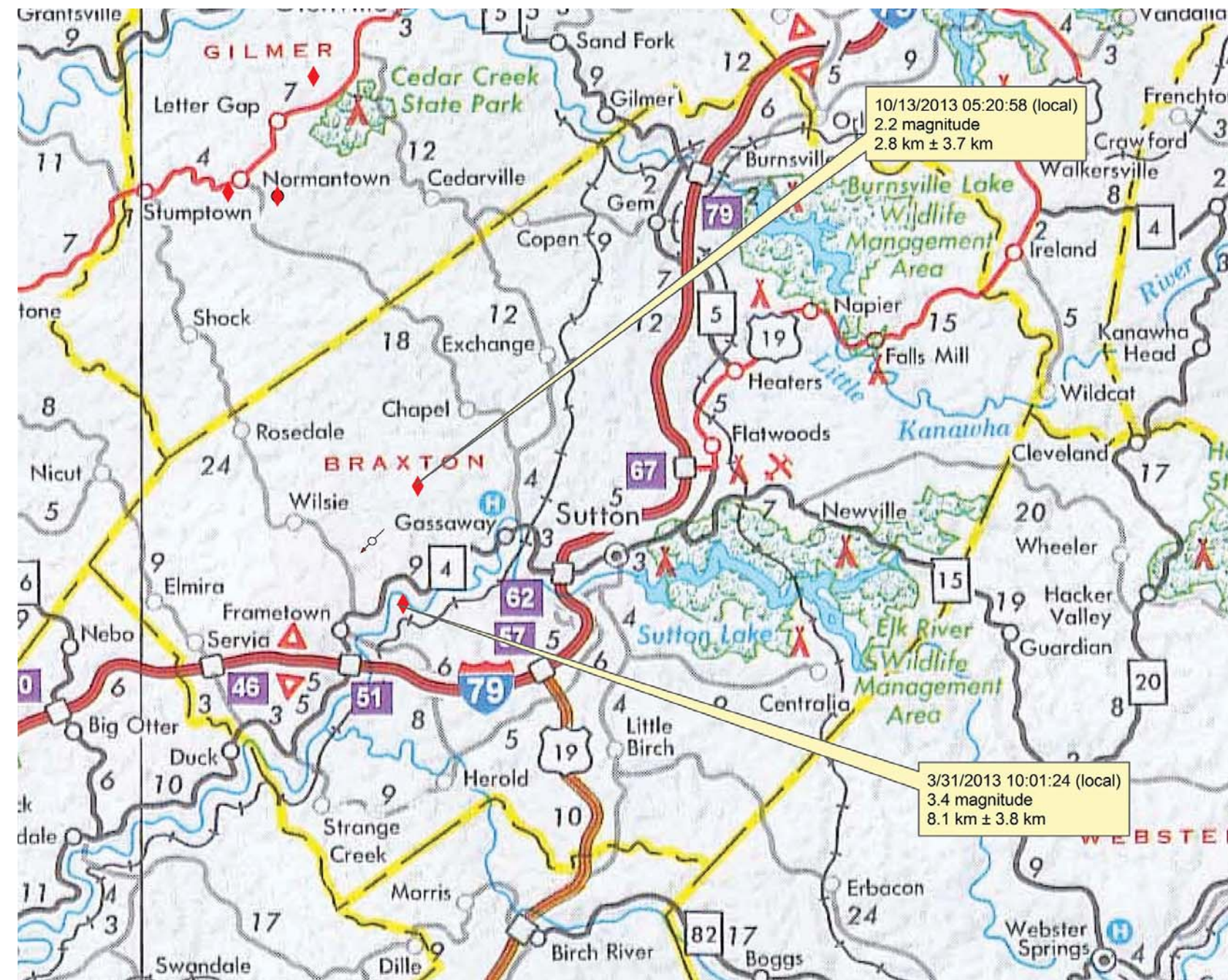
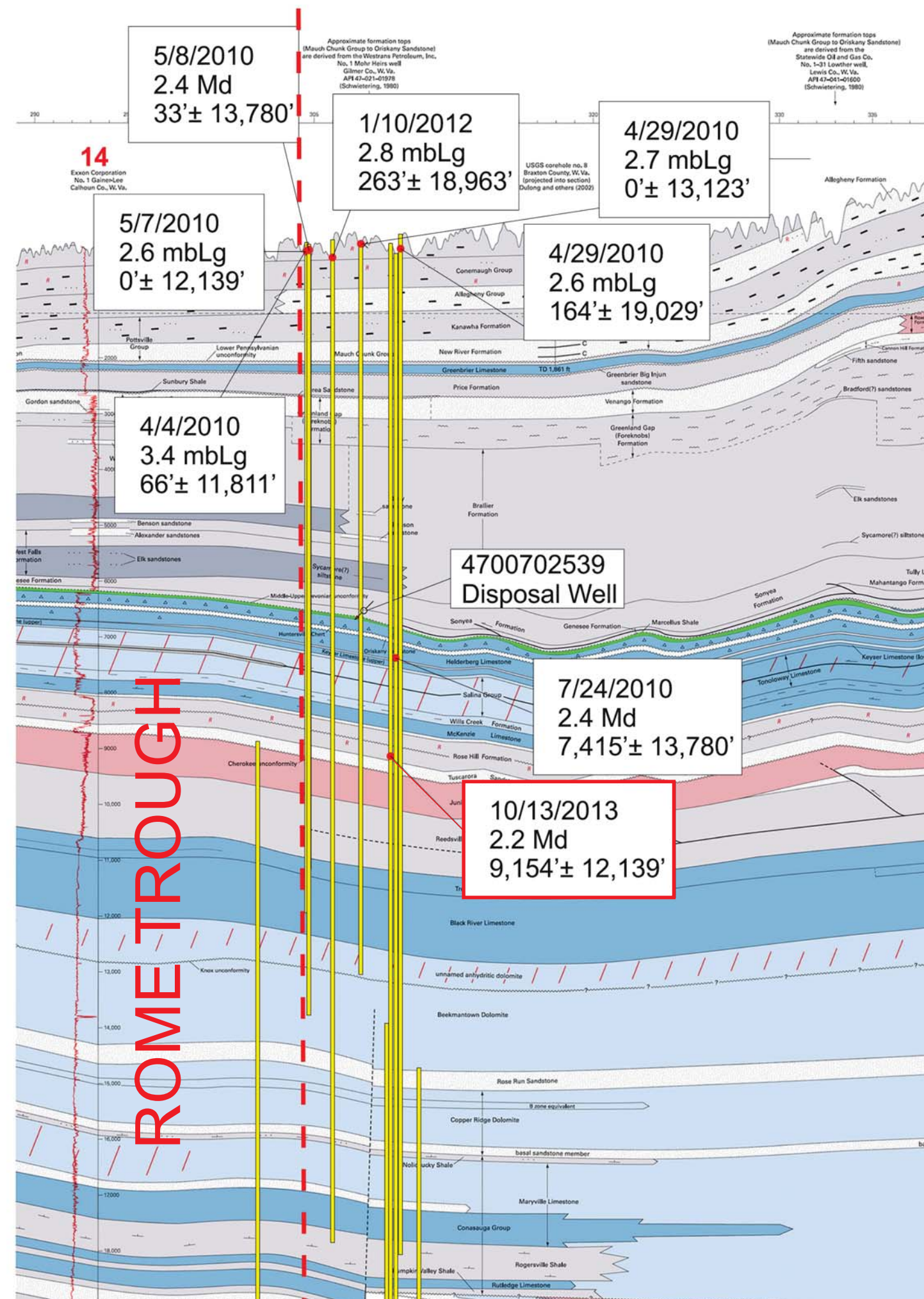


**SUTTON EARTHQUAKE**  
 10/13/2013 05:20:58 (local)  
 2.2 Magnitude  
 Depth: **9,154 ft ± 12,139 ft**



This earthquake is located along the margin of the Rome Trough fault zone. 9,100 + ft depth places it below the Marcellus interval but possibly within a zone effected by waste-water injection. NOTE: a plugging permit was granted in August 2013 for the sole Braxton County disposal well.

Regional Cross-section (Ryder and others, 2008)