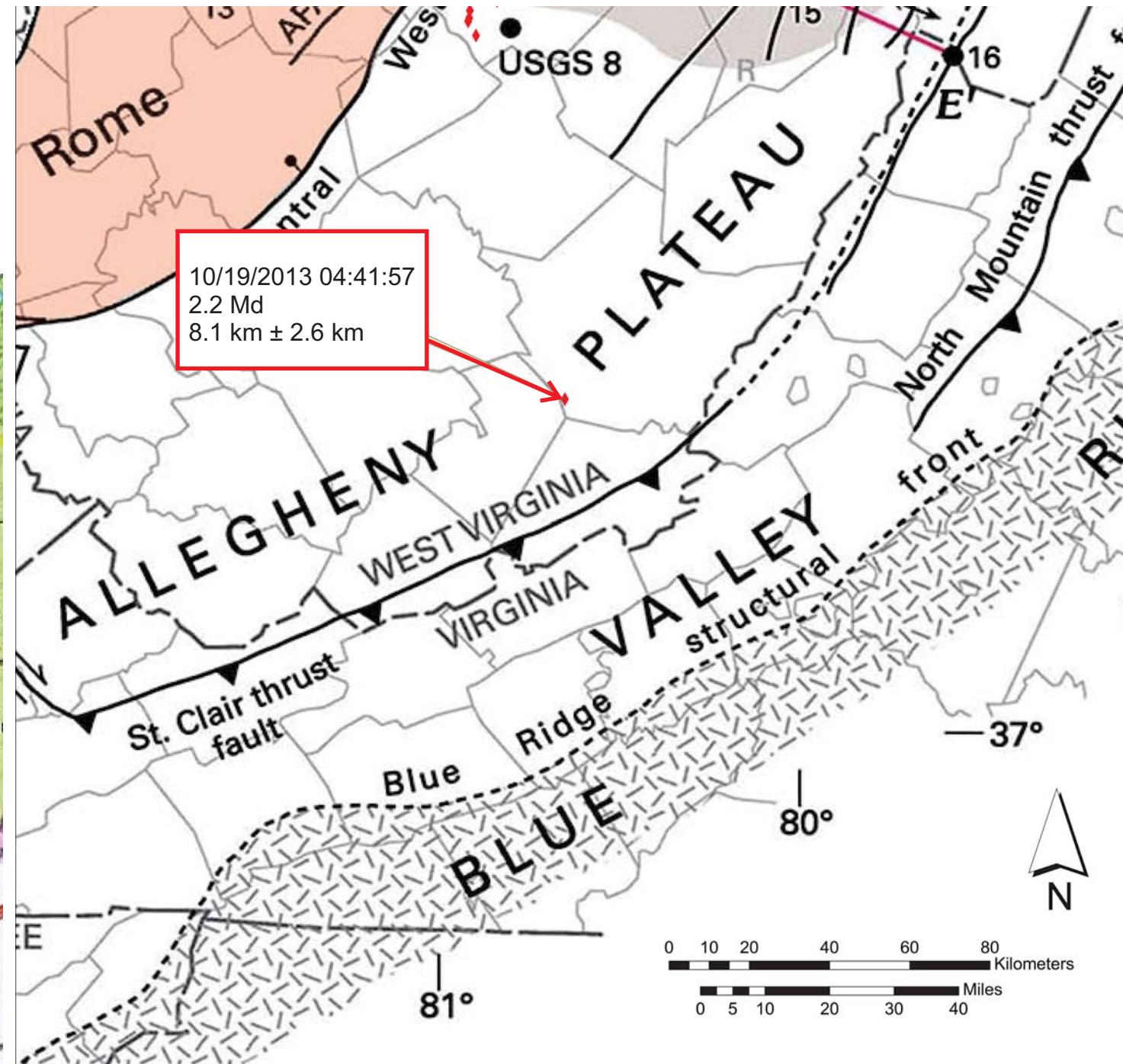
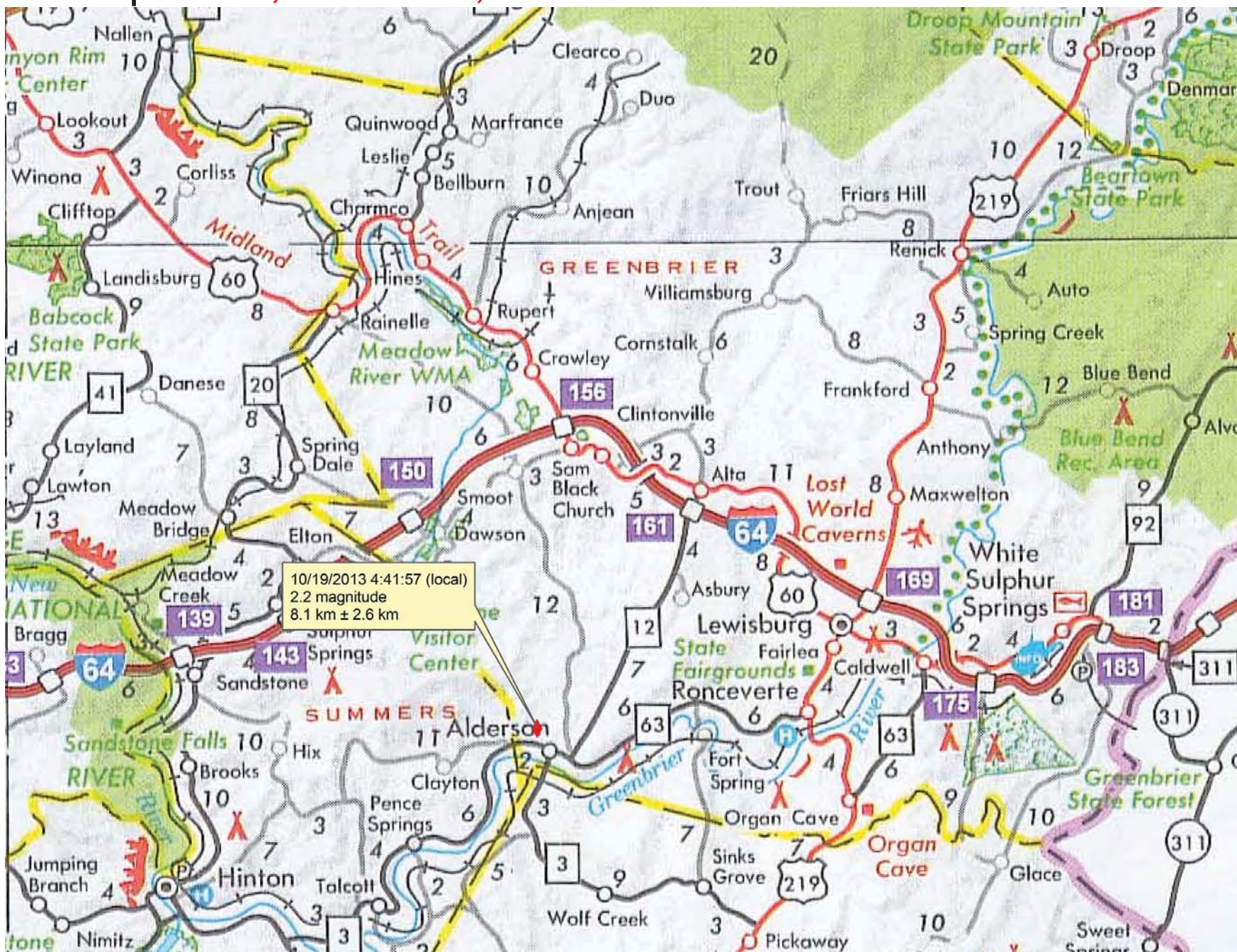


ALDERSON EARTHQUAKE
 10/19/2013 04:41:57 (local)
 2.2 Magnitude
 Depth: 26,574 ft ± 8,530 ft



Regional Structure Map (Ryder and others, 2008)

This earthquake is located approximately 20 miles NW of the St. Clair thrust, a major east-to-west structural feature that involves movement along Cambrian-Ordovician shales. 26,500 + ft depth for the quake suggests it is related to recurrent but infrequent motion along this fault.

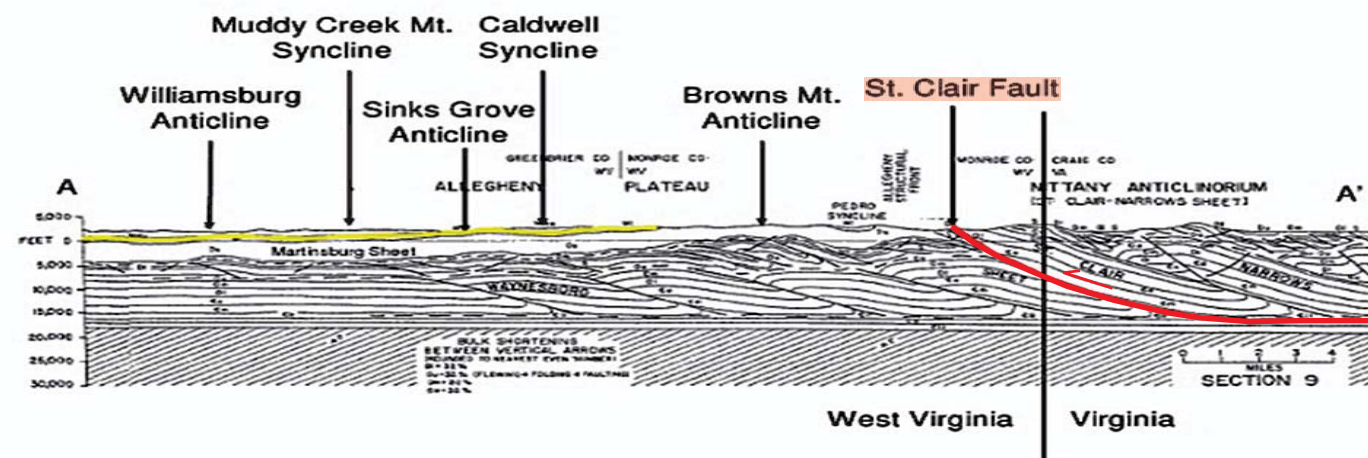


Figure 8: Cross section illustrating typical foreland thrust structures for the region with important features labeled (modified from Kulander and Dean, 1986). The surface study outcrops are along the Williamsburg anticline and Caldwell syncline. The subsurface study area is significantly southwest of this cross section. Location of cross section A-A' can be seen on Figures 2 and 3. The Price Formation is highlighted in yellow.