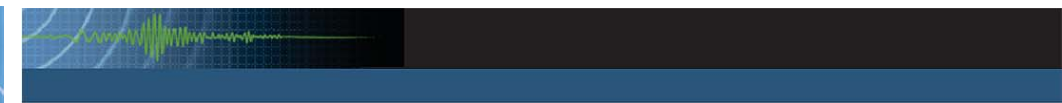
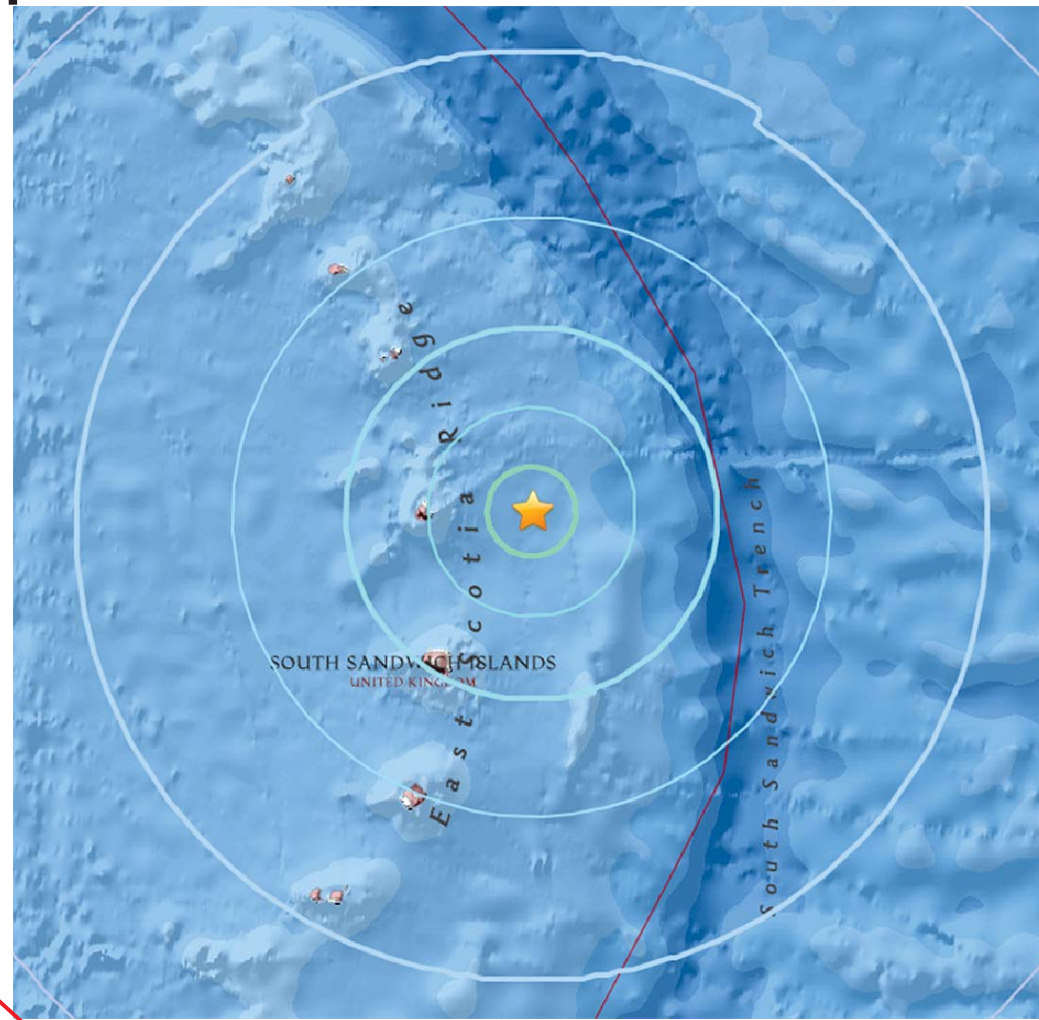
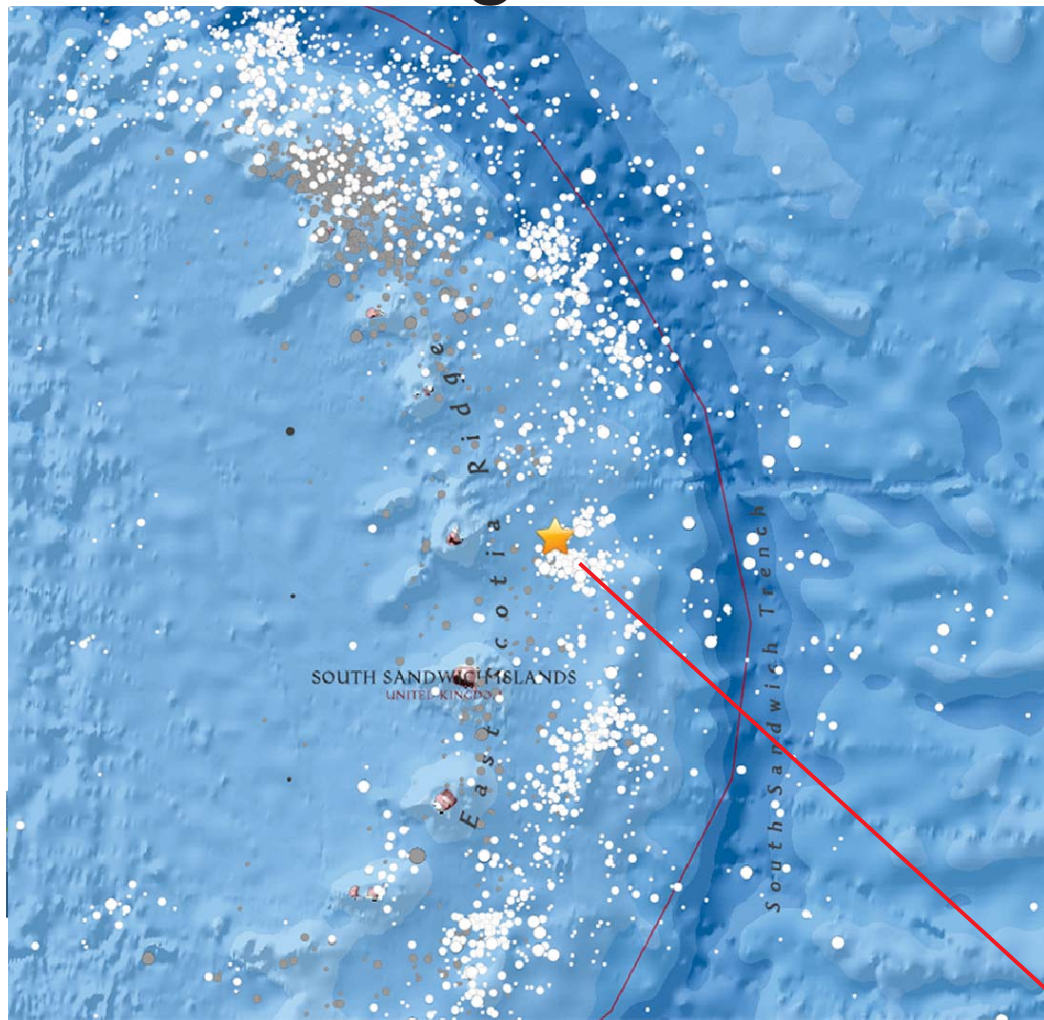


6.0 Magnitude Earthquake - Bristol Island, Atlantic Ocean 9/4/2017



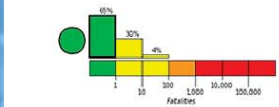
M 6.0 - 149km NNE of Bristol Island, South Sandwich Islands

2017-09-04 08:07:35 UTC | 57.789°S | 25.578°W | 35.0 km depth

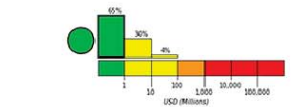
PAGER

Back to Impact
Contributed by US¹ last updated 2017-09-04 10:10:31 (UTC)
✓ The data below are the most preferred data available

Estimated Fatalities

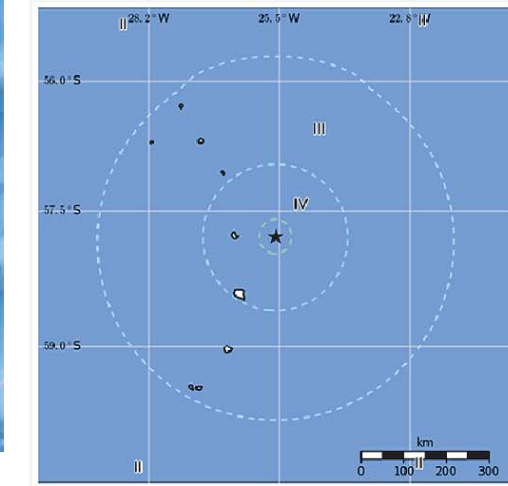


Estimated Economic Losses



Green alert for shaking-related fatalities and economic losses. There is a low likelihood of casualties and damage.

Estimated Population Exposure to Earthquake Shaking



Structure Information Summary

Overall, the population in this region resides in structures that are a mix of vulnerable and earthquake resistant construction. The predominant vulnerable building types are adobe block with concrete bond beam and low-rise nonductile concrete frame with infill construction.

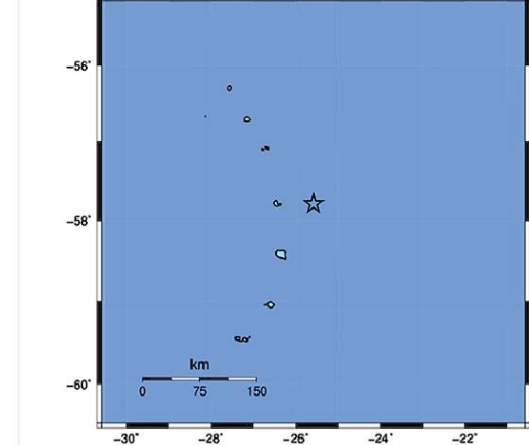
ShakeMap

Back to Impact
Contributed by US¹ last updated 2017-09-04 10:09:12 (UTC)
✓ The data below are the most preferred data available

- Intensity
- PGA
- PGV
- Station List
- Metadata
- Uncertainty
- PSA

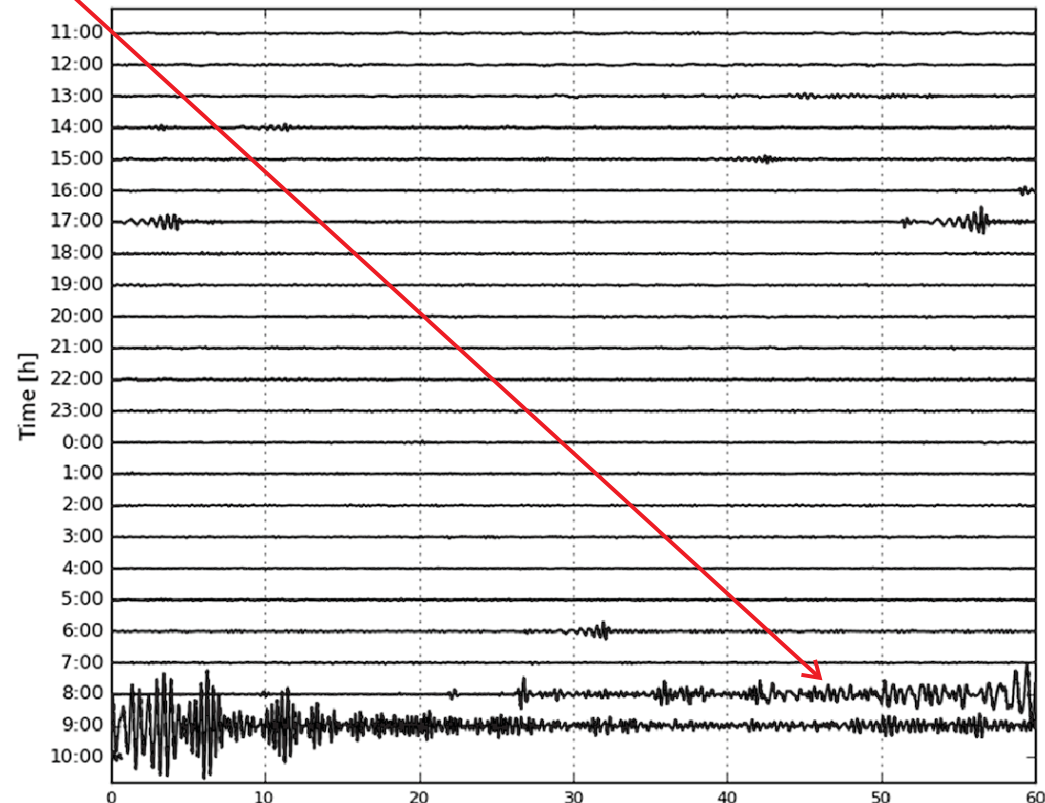
USGS ShakeMap : SOUTH SANDWICH ISLANDS REGION

Sep 4, 2017 08:07:35 UTC M 6.0 57.79 W25.58 Depth: 35.0km ID:us20170904h9



PERCEIVED SHAKING	Not felt	Weak	Light	Moderate	Strong	Very strong	Severe	Violent	Extreme
POTENTIAL DAMAGE	none	none	Very Light	Light	Moderate	Mod./Heavy	Heavy	Very Heavy	
PEAK ACC (mg)	<0.05	0.3	2.0	6.2	12	22	40	75	>130
PEAK VEL (cm/s)	<0.02	0.1	1.4	4.7	9.6	20	41	86	>170
INSTRUMENTAL INTENSITY	I	II-III	IV	V	VI	VII	VIII	IX	X

US.MCWV.00.LHZ Start: 2017/09/03 11:00 UTC



Time [m] (bandpass: 0.004-0.05Hz Trace Spacing: 3.33e-04 mm/s)

Population per 1 sq. km, from LandScan

MMI	Shaking	Pop.
I	Not Felt	..'
II-III	Weak	..'
IV	Light	0 k
V	Moderate	0 k
VI	Strong	0 k
VII	Very Strong	0 k
VIII	Severe	0 k
IX	Violent	0 k
X	Extreme	0 k