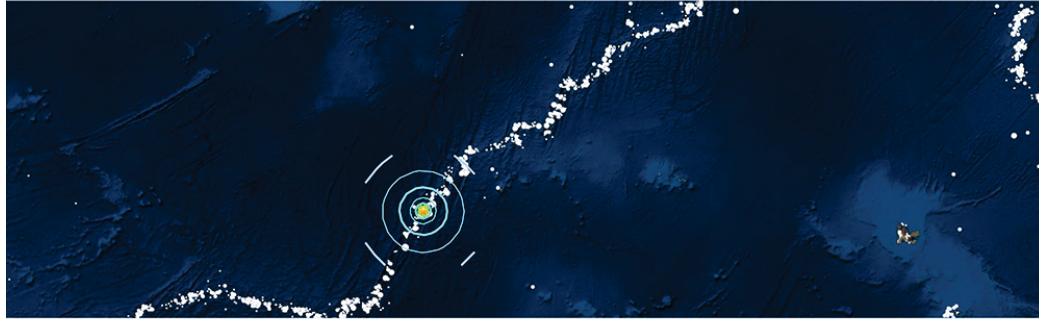


6.1 Mag. Earthquake, Southern Indian Ocean - 9/26/2020

M 6.1 - south of Africa
 2020-09-26 17:10:22 (UTC) | 48.031°S 31.764°E | 10.0 km depth



Administrative Region

Data not available.

Nearby Places

Port Elizabeth, Eastern Cape, South Africa 1641 km (1019.7 mi) NNW	Population: 967677
Port Alfred, Eastern Cape, South Africa 1651.9 km (1026.4 mi) NNW	Population: 17959
Kruisfontein, Eastern Cape, South Africa 1660.7 km (1031.9 mi) NNW	Population: 16991
Uitenhage, Eastern Cape, South Africa 1668.1 km (1036.5 mi) NNW	Population: 228912
Bhisho, Eastern Cape, South Africa 1721 km (1069.4 mi) NNW	Population: 137287

Distance and direction from epicenter to nearby place.

Tectonic Summary

Data not available.

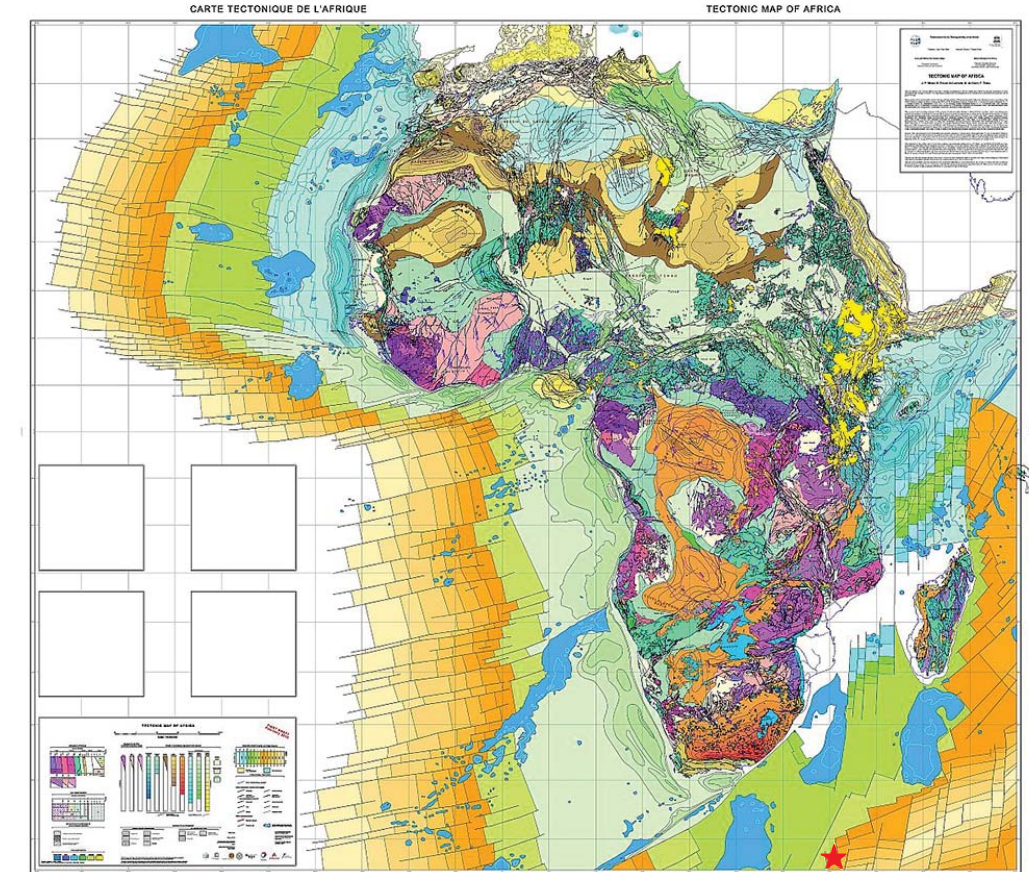
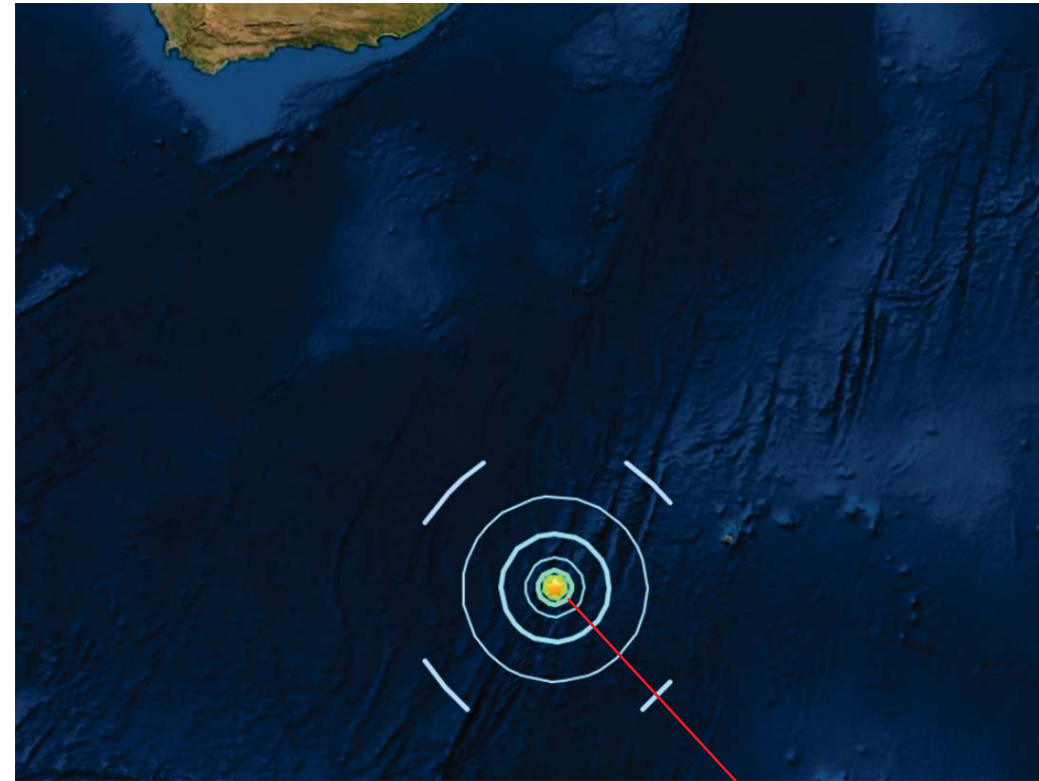


Figure 2. Draft Tectonic Map of Africa (February 2010).

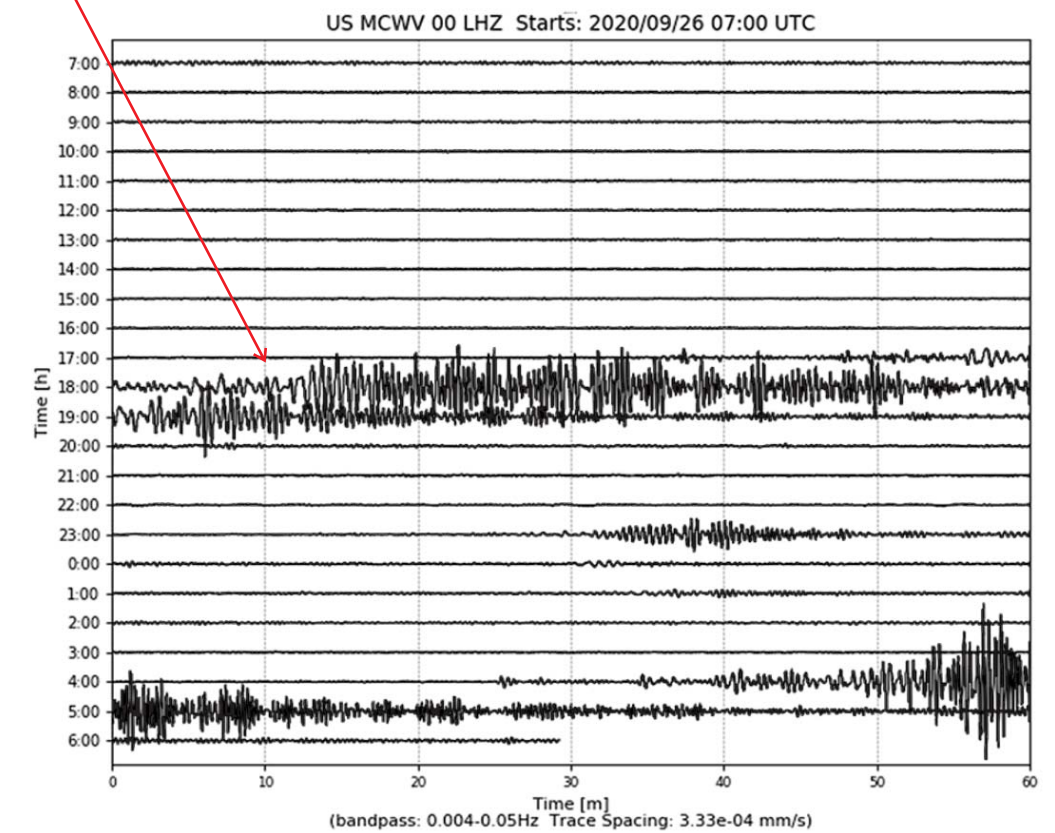
Felt Report - Tell Us!

0 0 0 0 0 0

Responses

Contribute to citizen science.
 Please [tell us](#) about your experience.

Citizen Scientist Contributions



Large (6.1 Mag.), shallow (10 Km) offshore earthquake. Felt by nobody.