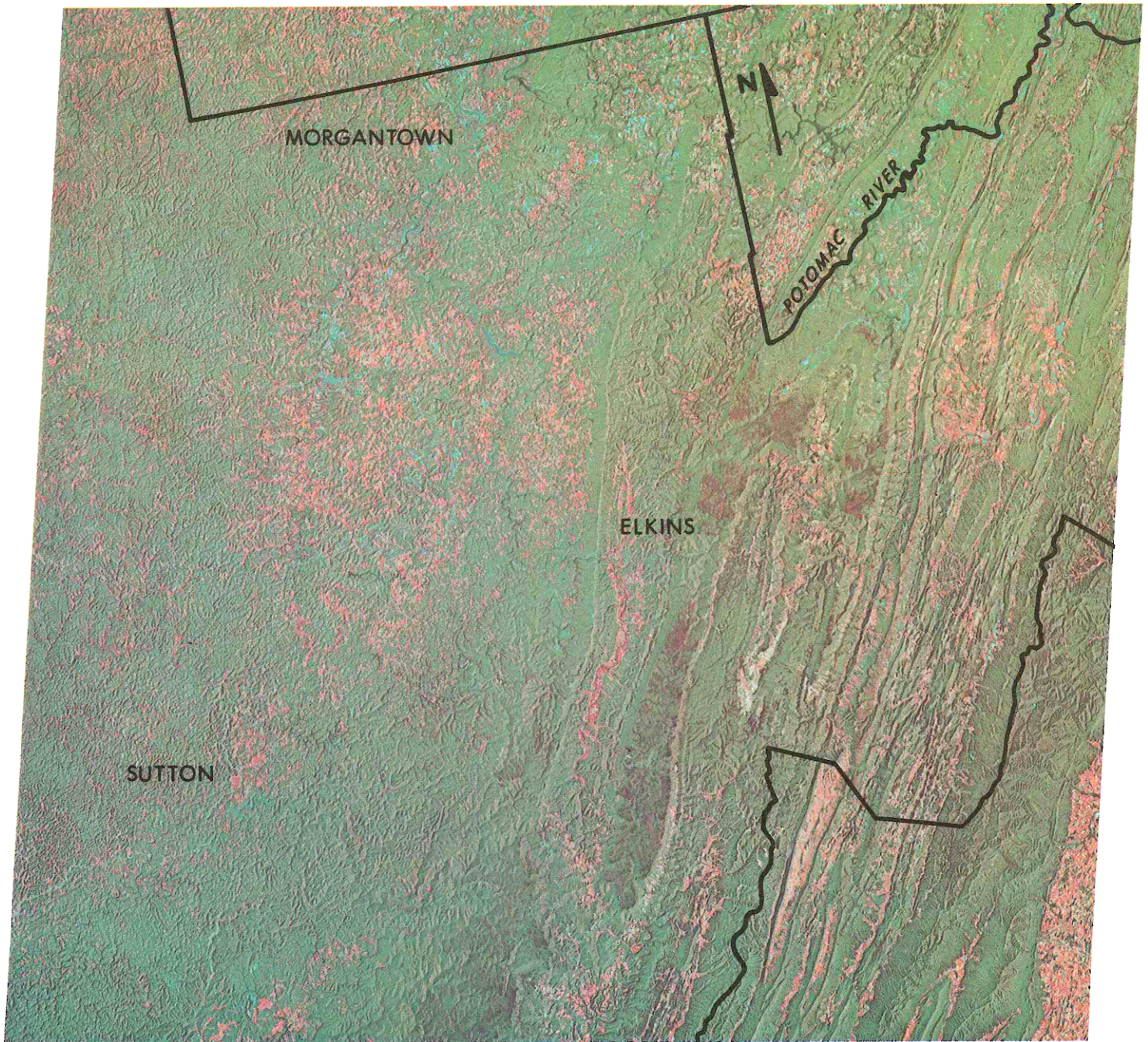


LANDSAT IMAGE OF EASTERN WEST VIRGINIA



This color-infrared image was taken from the Landsat-1 satellite orbiting 575 miles above the earth. Each side of the image is approximately 100 miles long and the entire scene covers about 10,000 square miles. The satellite's sensors record reflected colors from the earth's surface in electronic form. This information is relayed to ground stations where computers are used to produce photographic-like images.

This image shows the two major geographic provinces of West Virginia: the Appalachian Valley and Ridge on the right and the Appalachian Plateau on the left.

The unusual pink coloration is caused by green vegetation which appears pink or red in all infrared pictures. The red and pink colors are fields and open meadows with few trees. Evergreen trees are shown in dark red on some of the ridges; the green areas are leafless deciduous trees. Light blue areas indicate barren land. These areas are usually surface mines, but recently plowed fields are also this color. Reservoirs are shown in dark blue. Four-lane highways on the western side are seen as thin white lines. Urban areas appear as a fuzzy blue-grey color.



Scale approximately 1:1,000,000



**WEST VIRGINIA GEOLOGICAL AND
ECONOMIC SURVEY**

**Robert B. Erwin, Director and State Geologist
P. O. Box 879, Morgantown, WV 26505**