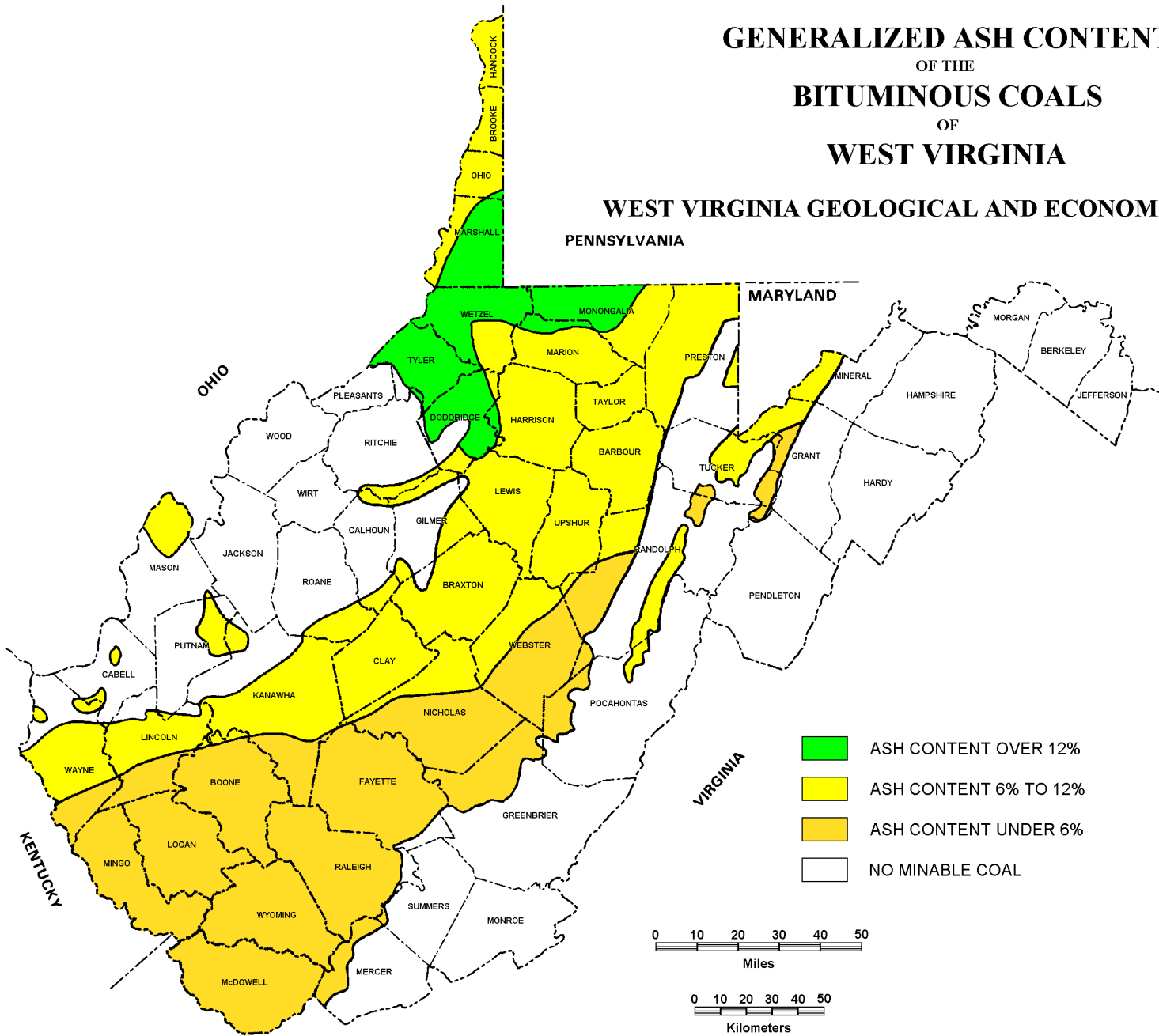


GENERALIZED ASH CONTENT OF THE BITUMINOUS COALS OF WEST VIRGINIA

WEST VIRGINIA GEOLOGICAL AND ECONOMIC SURVEY
PENNSYLVANIA



- ASH CONTENT OVER 12%
- ASH CONTENT 6% TO 12%
- ASH CONTENT UNDER 6%
- NO MINABLE COAL

