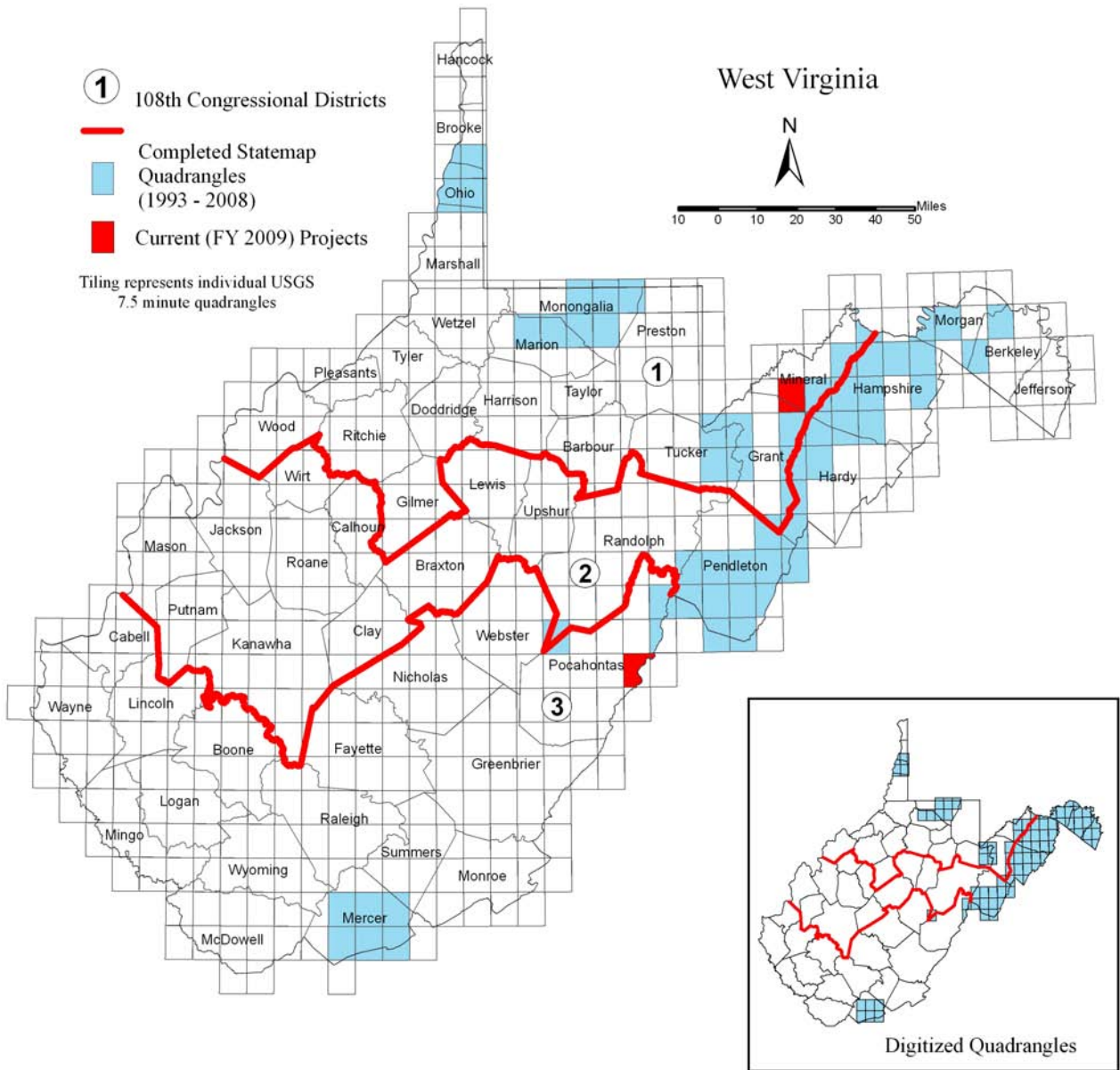




# National Cooperative Geologic Mapping Program 2009



## West Virginia Geological and Economic Survey

State Geologist: Michael E. Hohn (304 594-2331)  
STATEMAP Contact: Michael E. Hohn (304 594-2331)  
<http://www.wvgs.wvnet.edu/>

## U.S.G.S. – NCGMP

Program Coordinator: Peter T. Lyttle (703 648-6943)  
Associate Program Coordinator: Randall C. Orndorff (703 648-4316)  
Associate Program Coordinator: Linda Jacobsen (703 648-4335)  
<http://ncgmp.usgs.gov/>

**SUMMARY OF STATEMAP  
GEOLOGIC MAPPING PROGRAM IN WEST VIRGINIA**

<b>Federal Fiscal Year</b>	<b>Project Quadrangle</b>	<b>State Funding</b>	<b>Federal Funding</b>	<b>Total Funding</b>
1993	Canaan Valley	\$26,545	\$23,167	\$49,712
1994	Canaan Valley - Davis	40,987	23,000	63,987
1994	Big Pool/Glengary	40,836	30,000	70,836
1995	Canaan Valley - Mt. Storm	39,251	22,000	61,251
1996	Hagerstown/Frederick	12,435	10,210	22,645
1996	Great Cacapon/Paw Paw	70,394	50,000	120,394
1997	Blackbird Knob	33,529	24,675	58,204
1997	Largent/Levels	69,166	63,568	132,734
1997	Palo Alto	37,910	30,400	68,310
1997	Cumberland/Winchester	16,876	16,201	33,077
1998	Doe Hill/Sugar Grove	50,764	43,241	94,005
1998	Winchester/Front Royal	28,809	24,568	53,377
1999	Bluefield/Princeton	39,391	28,676	68,067
1999	Moatstown	32,618	26,996	59,614
1999	Capon Bridge/Rio	33,089	30,449	63,538
2000	Oakvale/Athens	25,603	25,603	51,206
2000	Sector/Moorefield	28,775	28,775	57,550
2000	Brandywine	15,622	15,622	31,244
2001	Petersburg East and e. Rig	35,697	32,732	68,429
2001	Snowy Mountain, Spruce Knob	36,749	35,619	72,368
2001	Lerona and Matoaka	37,314	31,132	68,446
2002	w. Old Fields, w. Rig, Lake Lynn	36,309	34,692	71,001
2002	Circleville and Thornwood	33,006	27,559	60,565
2003	Morgantown North and South	39,000	25,645	64,646
2003	Franklin, e. Old Fields, w. Romney	34,918	26,818	61,736
2004	Ft Seybert, e. Romney, e. Spring.	42,095	32,569	74,664
2004	Osage and Rivesville	27,361	18,159	45,520
2005	Mozer, w. Springfield,, s. Patt. Crk.	44,688	37,321	82,009
2005	Grant Town	13,893	13,398	27,291
2006	Milam, Cow Knob, Headsville	45,539	26,780	72,319
2006	Wheeling, Tiltonsville, Bethany (WV)	32,999	15,953	48,952
2007	Burlington	13,579	12,357	25,936
2007	Val. Grove, Mannington, Bethany (PA)	36,770	12,651	49,421
2008	Medley, Sharp Knob, Hightown	86,458	66,134	152,592
2009	Antioch, Paddy Knob, Mustoe	47,516	47,134	94,650
	<b>Totals</b>	<b>\$1,286,491</b>	<b>\$1,013,804</b>	<b>\$2,300,295</b>

The STATEMAP component of the National Cooperative Geologic Mapping Program has increased the availability of accurate and up-to-date geologic maps for the state of West Virginia. The West Virginia Geological and Economic Survey has conducted geologic mapping in areas prioritized by the following criteria: infrastructure and economic development; high population growth; tourism and natural beauty; recreational use; environmental concerns; and significant water resources. Users of our maps include planning commissions, state and Federal agencies, schools, companies, and private individuals.

In West Virginia, geologic maps have been used in locating and evaluating waste disposal sites; identifying domestic water sources for homeowners in areas with no public water supplies; identifying problems associated with replacement wetlands in conjunction with Corridor H construction; educating public school teachers through field trips; conducting baseline geochemical surveys; teaching undergraduate geology majors through programs funded by the American Association of State Geologists and the USGS; and identifying historic landslides and their possible relation to past earthquakes.

Recent Outcome: An environmental and geotechnical firm in northern West Virginia used bedrock geology maps and status of mineable coals to predict likelihood of mine subsidence.